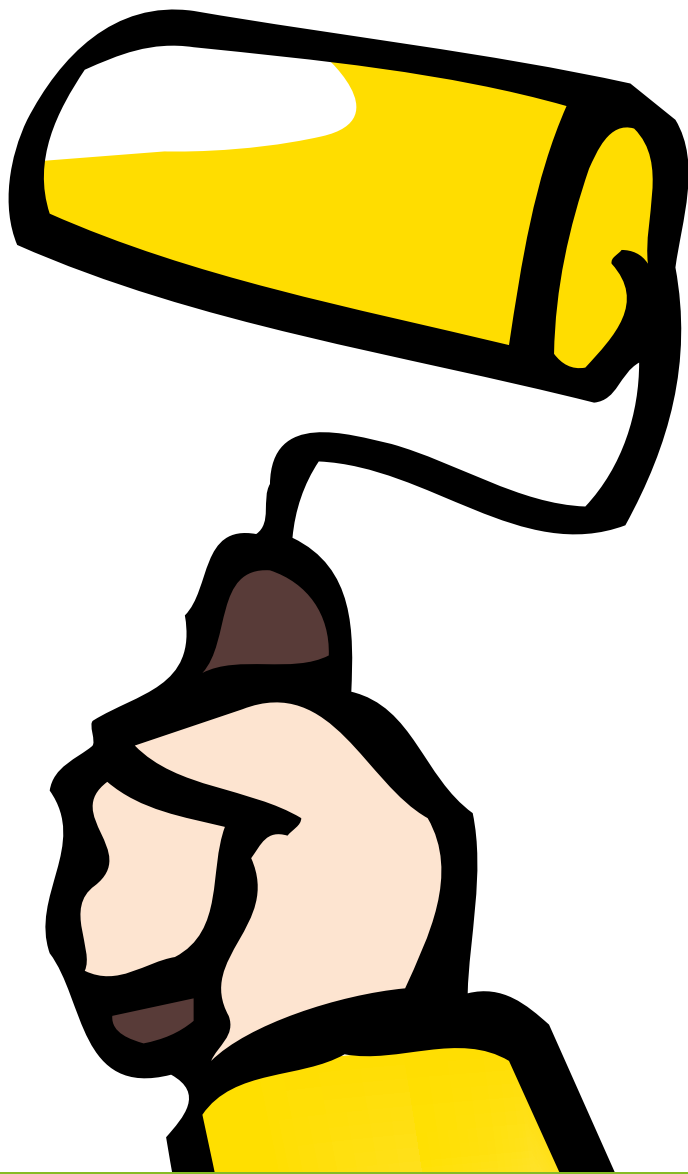


Product range



Petro Union GmbH

Spedition Straße 21

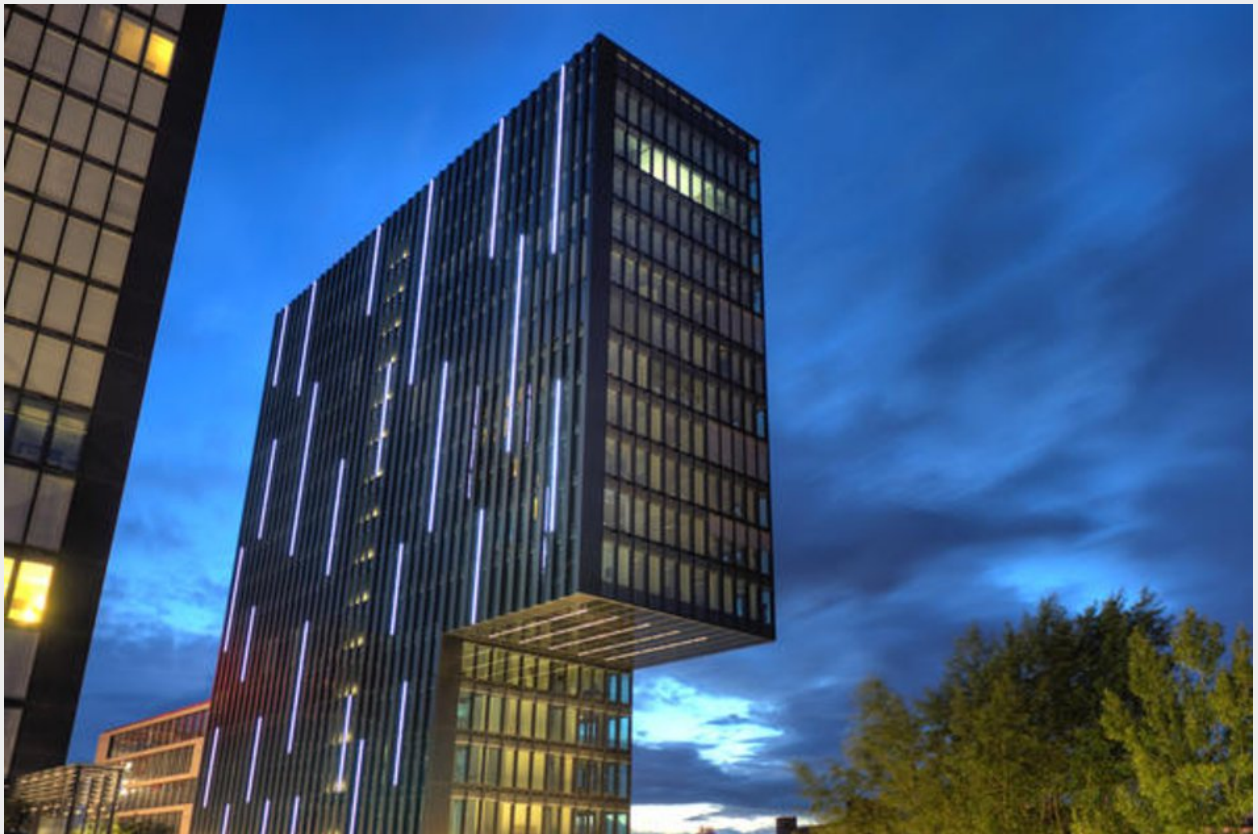
40221 Düsseldorf

Tel.: +49 (0) 211 882 316 27

Fax: +49 (0) 211 882 315 20

info@petrounion.de

www.petrounion.de



Marking Paints

380

Marking Paint



water-based

Water-thinnable marking paint, environment-friendly.
For reflective and non-reflective markings in interior and exterior areas, on concrete, asphalt and paving stones.
Enhanced reflective properties during the day, in conjunction with full long-distance reflection at night can be achieved by mixing in Aggregate 759.

- For interior and exterior applications
- Quick drying
- Good resistance
- Excellent build and opacity
- Spreading rate (m²/l):
Brush application/ roll on: 2–3
Spray: 2–3

Item No./ Shade	Container size	Carton contents
380-9010 white	750 ml	3
380-1023 yellow	2,5 l	2
380-9005 black	10 l	
380-3000 red		
380-6018 green		
380-5012 blue		



754

Industrial Marking Paint



The high-performance marking paint for interior applications

Two-component, high-performance marking paint for industrial and commercial use in interior areas.
For markings on concrete, steel, aluminium and galvanised surfaces subject to heavy chemical and mechanical stress, e.g. suitable for use on floors with forklift traffic.

- For concrete, steel, aluminium, galvanised surfaces
- Low soiling tendency
- Resistant to severe mechanical stress
- Suitable for forklift traffic
- High chemical resistance
- Spreading rate (m²/kg):
Brush application/roll on: 5–7

Item No./ Shade	Container size	Carton contents
754-1023 yellow	1 kg	1
754-3000 red*	6 kg	1
754-5012 blue*		
754-9010 white		



* red and blue only available in 1 kg pots

752

Kronalux Marking Paint



High-performance paint for interior and exterior applications

Plastic marking paint with smooth surface. Kronalux Marking Paint 752 is suitable for reflective and non-reflective markings on concrete, asphalt and setts.
Primarily suited for industrial marking applications, in interior areas also, owing to the product's smooth surface (in comparison with Kronalux Road Marking Paint HS 750). The addition of Kronalux Aggregate 759 offers enhanced traffic safety characteristics and this also increases the abrasion resistance.

- For interior and exterior applications
- Very quick drying
- Good opacity
- High abrasion resistance
- Low saponification properties
- Airless spray application possible
- Spreading rate (m²/l):
Brush application/roll on: 2–3
Spray: 2–3

Item No./ Shade	Container size	Carton contents
752-9010 white	750 ml	6
752-1023 yellow	2,5 l	6
752-9005 black	10 l*	
752-3000 red		
752-6018 green		
752-5012 blue		



* not in red, green and blue



750

Road Marking Paint HS



High-solid road marking paint with BAST-No.: 2001 DS 07.09 (400µm) for the shade white. For road markings on heavily used road surfaces of concrete, asphalt and setts; for motorways, regional highways and city road markings; for runway markings in airports; for mandatory signs and guidelines on track systems, direction arrows, pedestrian (zebra) crossings, car parks and kerb markings.

For outdoor use under extreme conditions

- Super-quick drying
- Minimum disruption of traffic
- Low saponification properties
- High abrasion resistance
- on concrete, asphalt, setts
- Extremely good visibility at night
- Also suitable for use on motorways and in airports
- Spreading rate (m²/l):
Brush application/roll on: 2–3

Item No./ Shade	Container size	Carton contents
750-9010 white	750 ml	6
750-1023 yellow	2,5 l 10 l 37 kg	6

* 37 kg container only available in white.



757

Kronalux 2K-PU-Industry Marking Paint



Kronalux 2K-PU-Industry Marking Paint 757 was developed for industrial Markings with maximum load. After a short drying time (24h*) the surfaces are full loadable. The rooms can be reused very quickly. The product is suitable with interiors and exteriors. The mud insensitive surface is softener stable and therefor optimally suitable for garage soil.

Fast drying time!
After 24h full loadable*

- For industrial markings with maximum load
- Fast drying time/ after 24h full loadable*
- Mud insensitive surface
- For exterior markings and all-over markings
- Spreading rate (m²/l):
Brush application/roll on: 4-5

Item No./ Shade	Container size	Carton contents
757-9010 white	1,1 kg	1
757-1023 yellow	3,5 kg	1
757-3000 red		
757-5012 blue		
757-6018 yellow-green		
757-9005 black		

* bei 20°C/55% humidity



759

Aggregate



Aggregate (including anti-skid aggregate and reflective beads) for mixing with 380 Marking Paint, 752 Kronalux Marking Paint and 750 Kronalux Road Marking Paint HS. The addition of aggregate to marking paints significantly improves anti-skid characteristics, reflective properties and the traffic safety properties of the marking paint.

- Significantly improves anti-skid characteristics and the traffic safety properties of the marking paint
- Enhances reflective properties
- Required for public roads in conjunction with 750 HS, white
- Added amount:
50% aggregate to 100% marking paint

Item No./ Shade	Container size	Carton contents
759-0000	1 kg 5 kg 25 kg	

753

Kronalux Marking Spray



For efficient marking work

Plastic marking spray for quick and efficient marking work on interior or exterior surfaces. Application with hand-held marking device or marking trolley, line width 80–120 mm.

Contains no toluene, lead or chlorinated solvents.

- For interior and exterior applications
- Very quick drying
- Good opacity
- High abrasion resistance
- Low saponification properties
- Spreading rate:
At 10 mm line width:
approx. 30–35 m/750 ml tin

Item No./ Shade	Container size	Carton contents
753-9010 white 753-1023 yellow 753-3000 red 753-5012 blue 753-9005 black	750 ml	6



756

Kronalux Line Marking Spray



For rational Markings

Kronalux line marking spray for marking on concrete, asphalt and plaster indoors and outdoors. Weather-resistant, stain-resistant, well covering and fast drying. Spray jet width (5-10 cm) can be adjusted through spray distance. Does not contain toluene, no lead and no bleached solvents.

- For inside and outside
- Very fast drying
- High coverage
- Hardly saponifiable
- Spreading rate:
with 100 mm line with:
approx. 30-35 lfm/750ml case

Item No./ Shade	Container size	Carton contents
756-9010 white 756-1003 yellow	750 ml	6



761

Kronalux 2K-PU-Industrie-Markierspray



Für Hochleistungs-Markierungen

Kronalux 2K-PU-Industry-Marking-Spray 761 was developed for industrial Markings with maximum load. After a short drying time (24h*) the surfaces are full loadable. The rooms can be reused very quickly. The product is suitable with interiors and exteriors. The mud insensitive surface is softer and stable and therefore optimally suitable for garage soil.

- For industrial markings with maximum load
- Fast drying time/ after 24h full loadable*
- Mud insensitive surface
- For exterior markings and all-over markings
- Spreading rate (m²/l):
ca. 25 lfm/500ml case

Art.-Nr./ Farbton	Gebindegröße	Kartoninhalt
761-9010 weiß 761-1023 gelb 761-3000 rot 761-5012 blau	500 ml	6



* bei 20°C/55% humidity





All important traffic and warning signs, markings for no-parking zones and handicap spaces along with letters and numbers are available. The reusable helpers are made of stable, 1 mm thick plastic.

- Individual models possible
- From 1 mm thick plastic
- Reusable
- All important traffic and warning signs
- Parking forbidden, handicap parking space and a lot more
- Letters and numbers

Art.-No.	Art.-indicator	Image-motive size (L x W)
7600001	PEDESTRIAN	427 x 724 mm
7600002	HANDICAPPED PARKING SPACE	390 x 648 mm
7600003	ENTRANCE / EXIT	680 x per 205 mm
7600004	STOP	820 x 420 mm
7600005	PARKING SPACE	840 x 205 mm
7600006	RESERVED	860 x 207 mm
7600007	VISITOR	860 x 207 mm
7600008	CYCLIST	763 x 422 mm
7600009	Ciphers 1-5 and 6-0	each 901 x 230 mm
7600010	STOPPING RESTRICTION	Ø 600 mm
7600011	LIMITED STOPPING RESTRICTION	Ø 600 mm
7600012	LETTERS A-Z	per letter 100 x 230 mm



Stencil for parking mark.

Line broadness: 10cm, length: 250cm.





753

Marking Applicator/Trolley



Versatile marking applicator for marking spray 753 and 756. Sturdy steel construction with 4 wheels and a direction arrow. Handle installation possible for right and left hand operation. Also appropriate for double sided edge markings. Spray process possible with one or two cans. Variable line width: 50-120 mm

- Gradually adjustable line width
- Robust sheet metal construction
- Direction arrow for precise marking
- Suitable with double sided edge markings

Item No./ Shade	Container size	Carton contents
753-MARK 1	1	

202

Spraymaster II - Hand Marker



Hand marker for marking spray 753 and 756. Spray help for the comfortable application of marking spray 753 and 756. Professional alternative to the spraying pistol.

- Simple, but effective handling
- Simple triggering function
- Exact positioning and guiding possible
- Protects the operator's hands

Item No./ Shade	Container size	Carton contents
202-0000	1	

